

Module 7: Developmental Issues, Prenatal Development, and the newborn

By:

Ray Hinson

Izzy Ognibene

Ashley Kelly

Olivia Burch

Two Major Developmental Issues

Developmental issues are mental and physical problems that humans have. What is exactly is a disability or more attributable to a **traumatic brain injury**. There are many people around the globe that that have these problems. Here are are couple of major problems that are associated with the human body.

Down syndrome

Cerebral Palsy

Down Syndrome

Down syndrome is a disability that deals with a human body having more **genes** than a normal person should have. The human features face structure is disorientated usually with missing teeth.

Usually, the person with this disability has a **temperament**, which involves the person having problems with thinking and taking those actions.



Cerebral Palsy

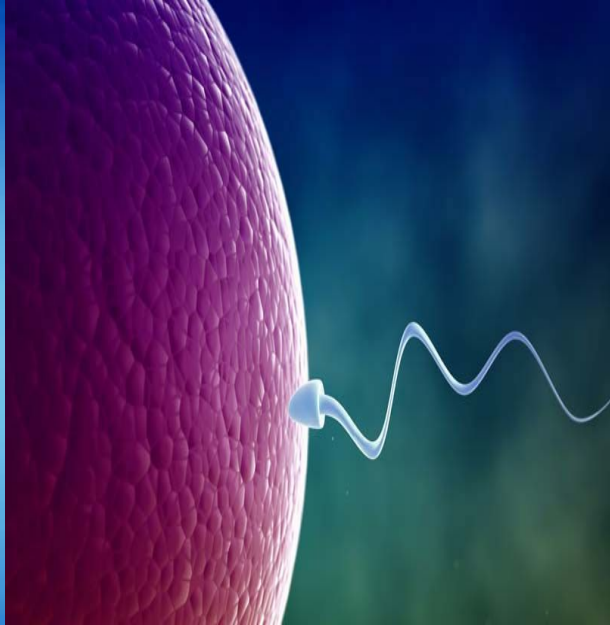
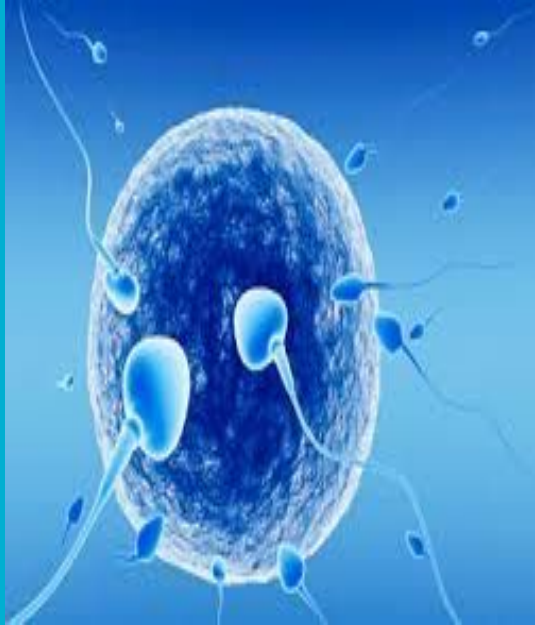
Cerebral Palsy is a disorder that involves barely being able to move, in addition some patients have paralysis in different parts of the body, especially muscles. Most patients don't usually have any **temperaments**. A lot of patients are usually are in a wheelchair, being paralyzed and or having major brain disfunction, making the patient having unusual thoughts.



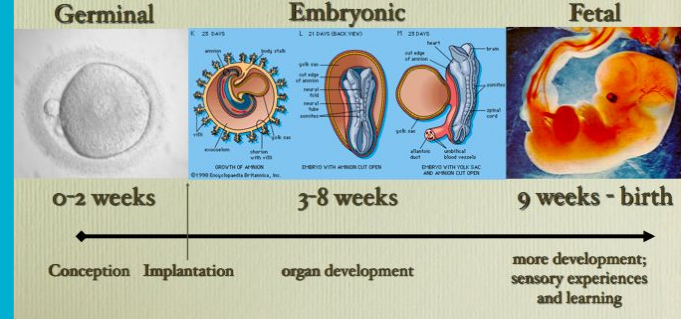
Conception

- **Conception** is the union of an egg and sperm. It is the initiation of pregnancy.
- Conception begins when a woman's ovary releases a mature egg when 200 million or more sperm deposited during intercourse race upstream towards it.
- The few sperm that make it to the egg release digestive enzymes that eat away at the egg's protective coating, allowing it to be penetrated.
- When one sperm begins to penetrate, the egg's surface blocks out the others.
- Fingerlike projections sprout around the sperm and pull it in.
- The egg nucleus and the sperm nucleus fuse before half a day elapses.

Conception (Continued)



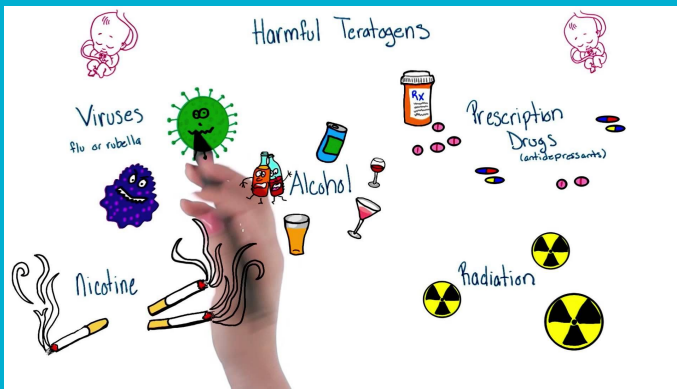
Prenatal Development...



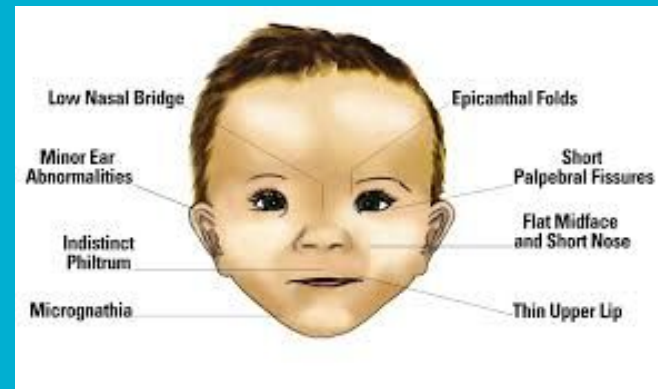
Definition: a process in which a human **embryo** and later **fetus** develops during pregnancy, from fertilization until birth.

There are 3 main stages:

- First is the germinal stage where it begins at conception when the sperm and egg cell unite in one of the fallopian tubes. The fertilized eggs, known as a **zygote**, then moves towards uterus, a journey that takes up to a week to complete.
- Second is the Embryonic stage, the mass cells is known as and **embryo**. Beginning of third week after conception marks start of embryonic period, time when the mass of cells becomes distinct as a human.
- Final stage is the Fetal stage, the embryo enter next stage and becomes known as **fetus**. This stage of development begins during the ninth week and lasts until birth.



Harms the development



Teratogens: they are harmful environmental elements that can effect the fetus.

Example of teratogens are:

- Maternal drug use
 1. Smoking
 2. Alcohol
- Maternal disease
 1. Herpes
 2. Rubella
 3. Aids

Fetal alcohol syndrome: is one of a spectrum of neurological impairments that can affect a child who has been exposed to alcohol in the wom.

The effects are trouble with school, trouble with the law and teen pregnancy, the fact they look “normal” but can't behave the way due to brain damage can cause them to face unrealistic expectations without appropriate support.

The Competent Newborn

Babies are born with reflexes to help get them through life.

These are the 5 different reflexes:

When someone touches a baby's cheek, they open their mouth ready to be fed. This is called the **Rooting Reflex**. The next step called the **Sucking Reflex** and **Grasping** is also included. This includes actions such as sucking on a finger or sucking the roof of their mouth.



The Competent Newborn Continued..



Other reflex's include the **Moro Reflex**. This is when the baby has less support and feels like theyre falling. This is shown by the baby spreading out their arms, then bringing them back together, and lastly crying. The last reflex is the **Babinski Reflex**. That's when the sole of the foot is stroked firmly and the big toe moves up toward the top of the foot as the other toes fan out. If this occurs with kids 2 years or older, this means they have a brain or nervous system disorder.

Review Questions

What are the 5 different reflexes?

What is prenatal development?

What are the 2 major developmental issues?

What harms the development of babies?