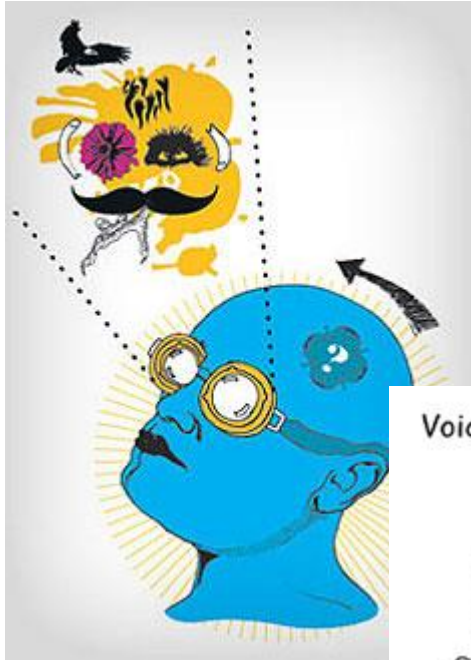


Journal

- Write a description of someone who might suffer from bipolar disorder. Make sure to include any important vocabulary in your description.

Positive v. Negative Symptoms



Voice feels loud in my head.



Positive Symptoms

- Presence of inappropriate symptoms

Negative Symptoms

- Absence of appropriate ones.

Schizophrenia Facts

- 1/100 people develop it in their lifetimes
- Typically strikes as young people enter adulthood
- Males affected earlier, more severely, and more often than females



Paranoid Schizophrenia



- Delusions: false beliefs, often of persecution or grandeur
- Hallucinations: sensory experiences without sensory stimulation
 - Generally auditory in the form of insults or being given orders



Disorganized Schizophrenia

- disorganized speech or behavior and flat or inappropriate emotion.
- **Flat Affect**: zombie-like state of apathy
- **Word Salad**: jumping from one idea to another mid-sentence
 - "Imagine the worst
Systematic, sympathetic
Quite pathetic, apologetic,
paramedic
Your heart is prosthetic"



Laugh at inappropriate times.

Catatonic Schizophrenia

- Immobility or excessive/purposeless movement
- Catatonia: motionless for hours



Causes of Schizophrenia

- Dopamine overactivity (creates positive symptoms)
- Low brain activity in frontal lobes
- Birth complications
- Breakdown in selective attention (cannot filter out information)
- Pregnancy viral infections



Causes of Schizophrenia

- Genetic component (if one identical twin has disease, other is 50% likely to)
- Brain decay/shrinkage
- Enlarged, fluid-filled areas in cerebral tissue

► MRI Scans of the Brains of Twins Discordant for Schizophrenia

