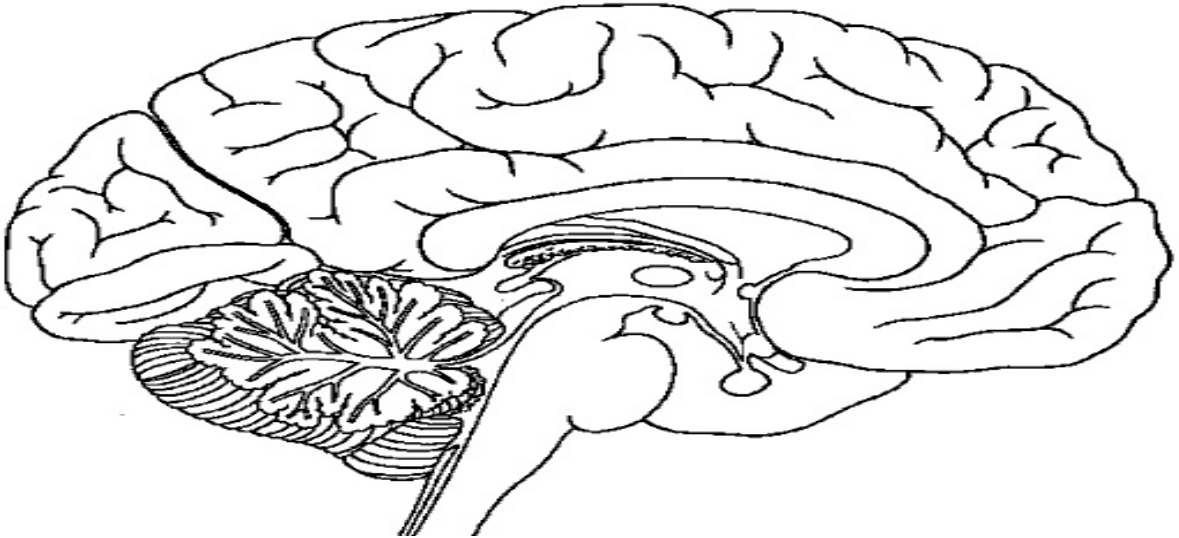


## Brain Day Lab

- 1) Brain Stem from a Medial view of the brain:



Color and label each of the following: cerebellum, brainstem, medulla oblongata, reticular formation, pons, visual cortex, corpus callosum, thalamus, and hypothalamus.

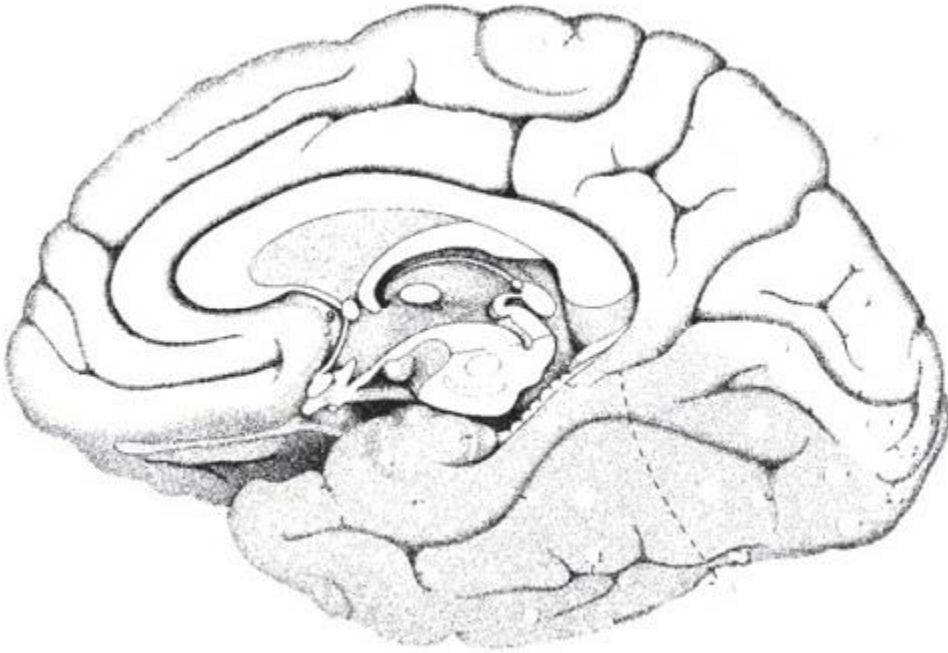
- 2) Describe the function of the corpus callosum. What does this suggest about its function? What is the surgery called when you split the corpus callosum?

### Brain Stem Parts

- 3) Describe the function of the thalamus.
- 4) Describe the function of the reticular formation.
- 5) Describe the function of the pons.
- 6) Describe the function of the medulla.
- 7) Describe the function of the cerebellum.

## Brain Day Lab

### 8) Limbic System



Color and label each of the following: hypothalamus, pituitary gland, amygdala, and hippocampus.

9) Describe the function of the hypothalamus and ventromedial hypothalamus and lateral hypothalamus.

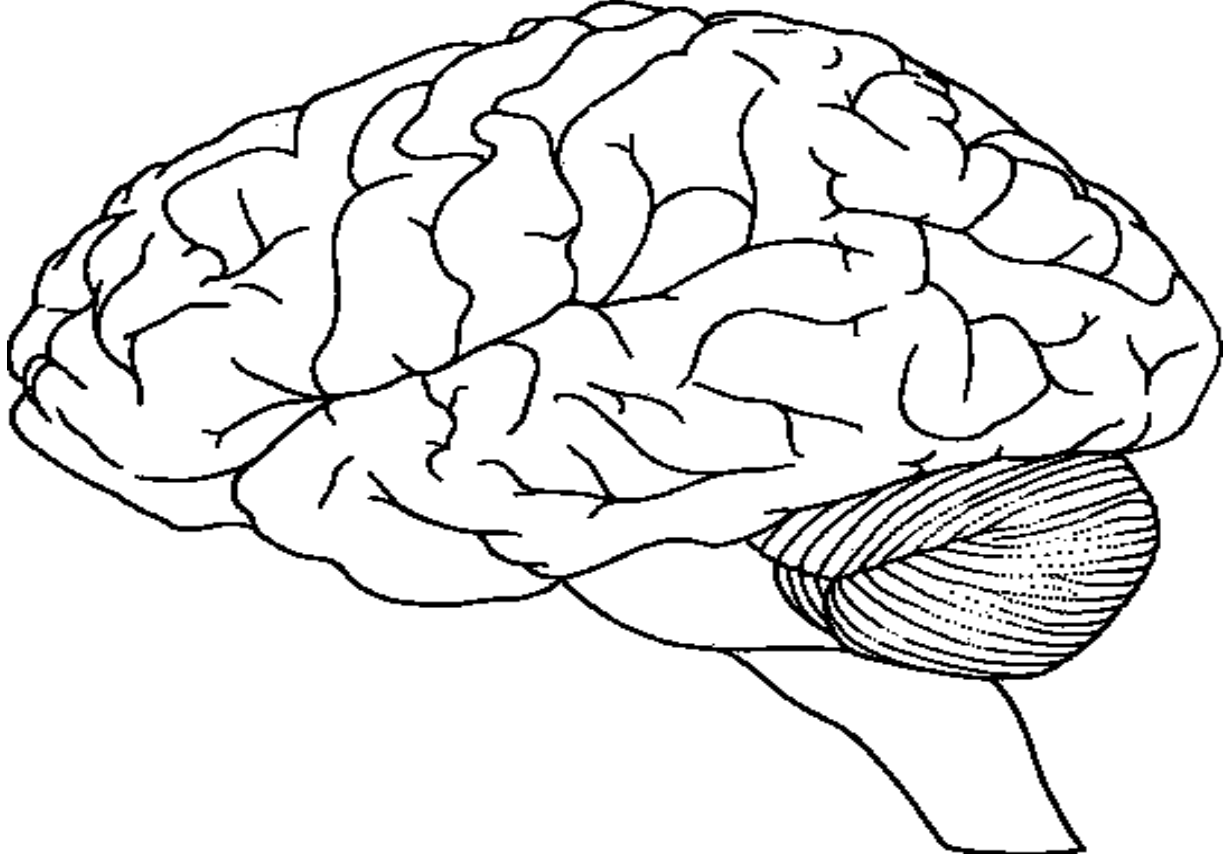
10) Describe the function of the Amygdala.

11) Describe the function of the hippocampus.

12) Describe the function of the pituitary gland.

## Brain Day Lab

- 13) Lateral view of the brain (sagittal):



Color and label each of the following: frontal lobe, motor cortex, parietal lobe, sensory cortex, occipital lobe, temporal lobe, Wernicke's area, and Broca's area (not all lines will be used).

- 14) Describe the function of the frontal lobe, parietal lobe, occipital lobe, and temporal lobe?
- 15) Describe the function of the Wernicke's area and Broca's area?
- 16) Describe the function of the sensory and motor cortex (make the connection between what side of the brain controls which side of your body). Why do you suspect that the motor cortex and sensory cortex are so close together? Why do you suspect they are located in the parts of the brain that they are?

## Brain Day Lab

17) Describe the functions of the left and right side of the brain.

18) Describe how the brain grows (direction and the oldest part to the youngest part).

**Methods of Studying the Brain.** Go to: <http://www.pbs.org/wnet/brain/scanning/index.html>

Briefly explain the following and provide at least one benefit for using each respective brain scan:

19) EEG

20) CT

21) PET

22) MRI

23) fMRI