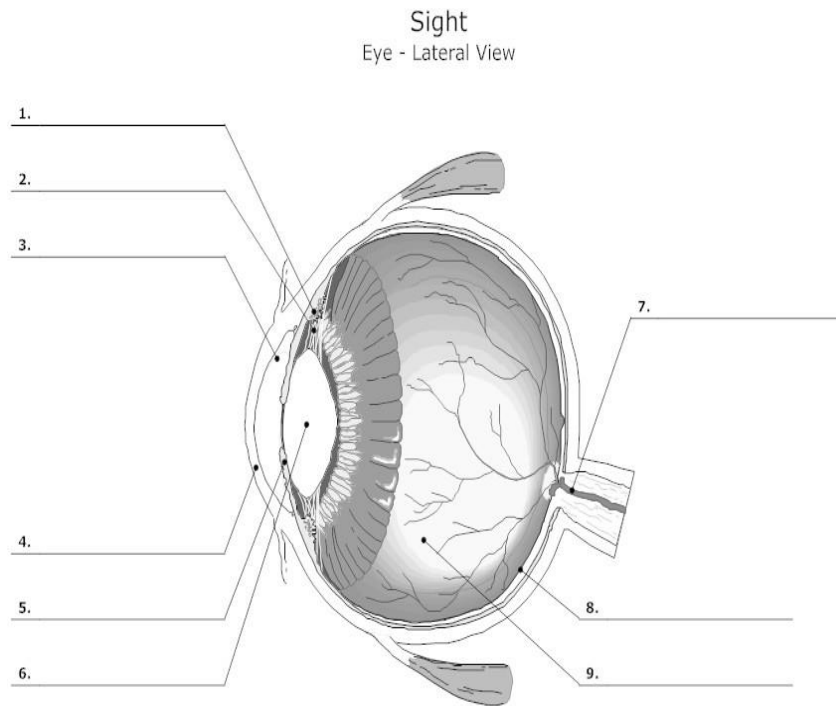


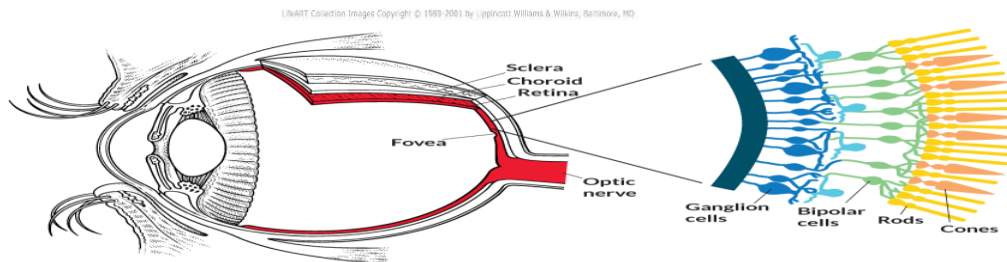
THE EYE

Part of the Eye	Function
Retina	
Lens	
Iris	
Pupil	
Fovea	
Optic Nerve	
Blind Spot	
Rods	
Cones	
Ganglion Cells	
Bipolar Cells	



OTHER EYE TERMS

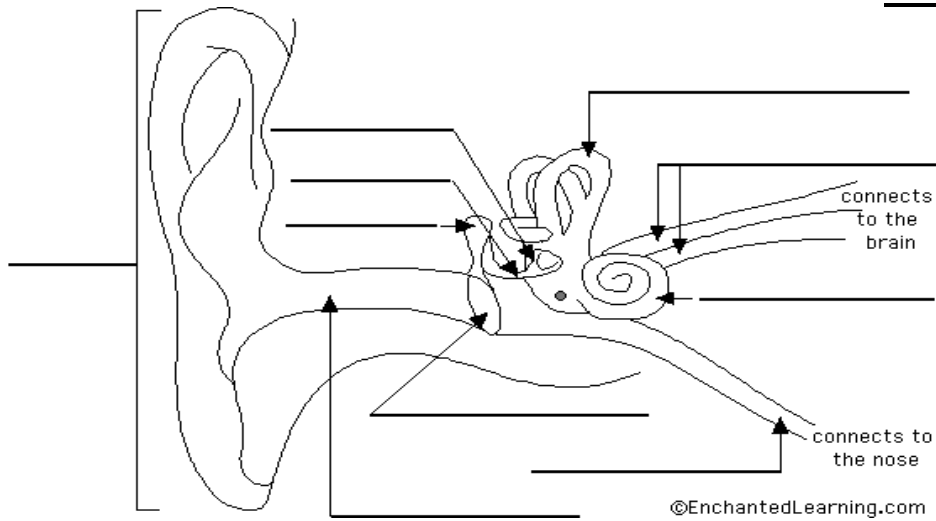
TERM	Definition
Wave Length	
Intensity	
Amplitude	
Trichromatic Theory	
Parallel Processing	
Opponent Process Theory	
Afterimages	
Accommodation	



TRANSDUCTION of the EYE

Sense (Scientific Term)	Organ for Sensing	Environmental Stimuli (energy source)	Transduced into..? (what energy source)	Specific organ site of transduction	Absolute Human Threshold
Vision/visual					

THE EAR



OTHER EAR TERMS

TERM	Definition
Audition	
Frequency (Pitch)	
Intensity	
Outer Ear	
Middle Ear	
Inner Ear	
Place Theory	
Frequency Theory	
Conduction Hearing Loss	
Sensorineural Hearing Loss	
Amplitude	
Timber	

Part of the Ear	Function
Ear Drum	
Cochlea	
Oval Window	
Basilar Membrane	
Auditory Nerve	
Hammer	
Anvil	
Stirrup	
Auditory Canal	
Semicircular Canal	
Pinna	

TRANSDUCTION of the EAR

Sense (Scientific Term)	Organ for Sensing	Environmental Stimuli (energy source)	Transduced into..? (what energy source)	Specific organ site of transduction	Absolute Human Threshold
HEARING / AUDITION					

TOUCH

Part of the Touch	Function
Types of Touch Feelings	
Fast Pathway	
Gate Control Theory	
Endorphins	

TRANSDUCTION of the TOUCH

Sense (Scientific Term)	Organ for Sensing	Environmental Stimuli (energy source)	Transduced into..? (what energy source)	Specific organ site of transduction	Absolute Human Threshold
TOUCH					

SMELL / OLFACTION

Part of the SMELL	Function
Cilia	
Olfactory Bulbs	
Olfactory Receptor Cells	
How smell differs from other senses.	
Pheromones	

TRANSDUCTION of the SMELL / Olfaction

Sense (Scientific Term)	Organ for Sensing	Environmental Stimuli (energy source)	Transduced into..? (what energy source)	Specific organ site of transduction	Absolute Human Threshold
Smell / Olfaction					

TASTE / GUSTATION

Part of the TASTE	Function
Papillae	
Taste Buds	
5 Types of Tastes	
Placement of Taste Receptors	
Role of Smell in determining taste.	

TRANSDUCTION of the TASTE / GUSTATION

Sense (Scientific Term)	Organ for Sensing	Environmental Stimuli (energy source)	Transduced into..? (what energy source)	Specific organ site of transduction	Absolute Human Threshold
Taste / Gustation					

VESTIBULAR SENSE and KINESTHETIC SENSE

Part of the Vestibular Sense	Function
Semicircular Canals	
Proprioception	
Part of the Kinesthetic Sense	Function
Body Awareness / Location of Body Sensors	
Proprioception	

TRANSDUCTION of the VESTIBULAR and KINESTHETIC SENSE

Sense (Scientific Term)	Organ for Sensing	Environmental Stimuli (energy source)	Transduced into..? (what energy source)	Specific organ site of transduction	Absolute Human Threshold
Vestibular					
Kinesthetic					